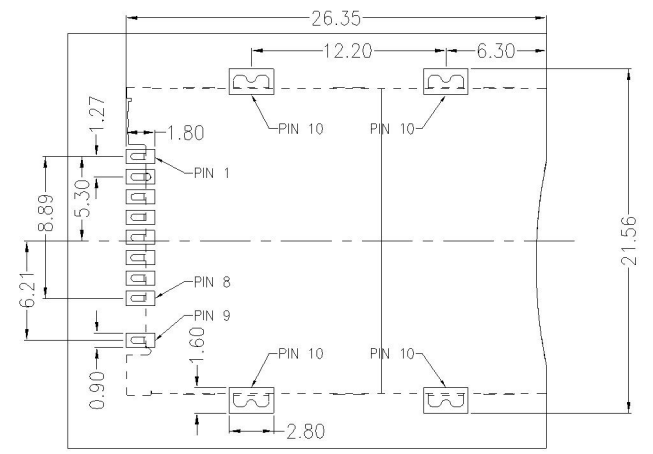
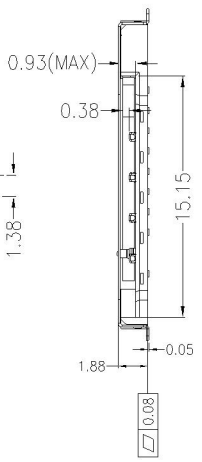
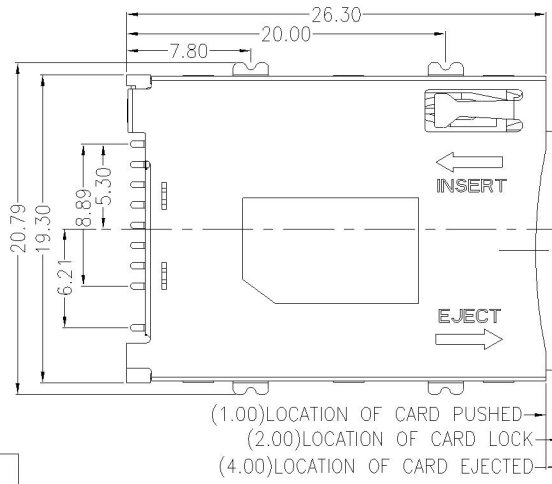
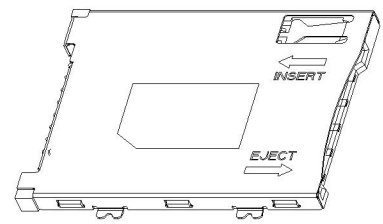
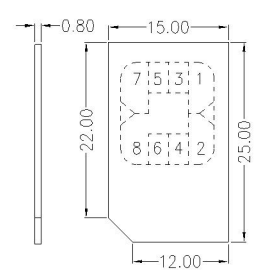
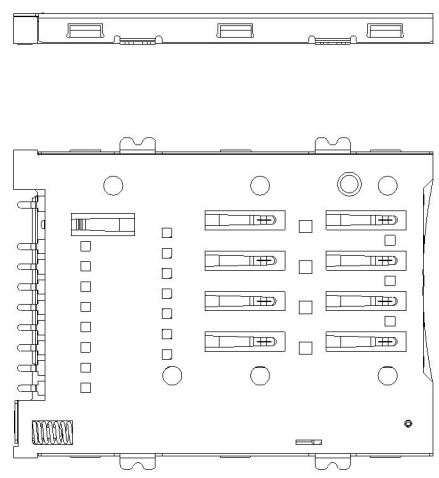
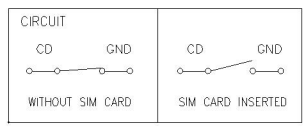


REV.	DESCRIPTION	APPD	DATE

- NOTES:
- MATERIAL:
HOUSING: HIGH TEMPERATURE THERMOPLASTIC
UL94V_0,COLOR:BLACK.
CONTACT: COPPER ALLOYS.
COVER: COPPER ALLOYS OR STEEL.
 - PLATING:
UNDERPLATE: NICKEL.
CONTACT AREA: GOLD OVER NICKEL.
SOLDER AREA: TIN OVER NICKEL.
 - MULTIMEDIA CARD COMPATIBLE

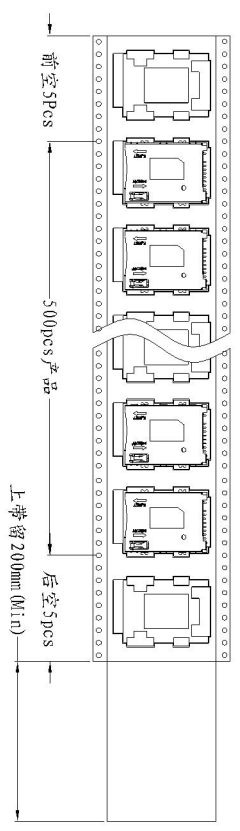
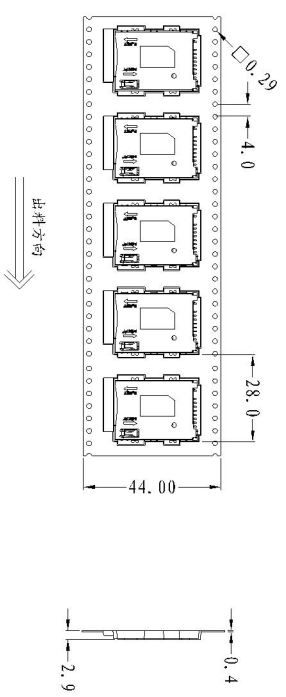


RECOMMENDED P. C. B HOLE LAYOUT
COMPONENT SIDE VIEW (TOLERANCE: +/-0.05)

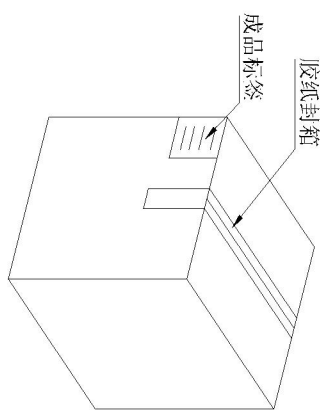


PIN NO.	NAME
PIN 1	VCC
PIN 2	GND
PIN 3	RST
PIN 4	VPP
PIN 5	CLK
PIN 6	I/O
PIN 7	DATO
PIN 8	MCMD
PIN 9	CARD DETECT Switch
PIN 10	GND

DWG NO: SMPXX-SIS1-2000-A	MATERIAL:	深圳市连欣科技有限公司	
LOT NO: XXX	FINSH:		
UNIT: mm	SIZE: A4	COLOR:	TITLE: SIM PUSH-PUSH卡座 1.9H
TOLERANCES: X.X=±0.35 X.XX=±0.25 X.XXX=±0.15	GENERAL ANGLE: X.X=±3.0° X.XX=±2.0°	DR: 杨凯 0720/12	PART NO: XDSM-08A1-094
APP:		CHK:	REV: C/0
SCALE: 1:1		SHEET: 1 OF 2	

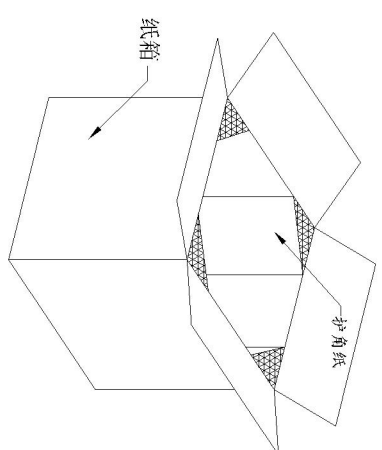
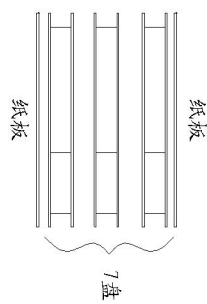


NO. 1

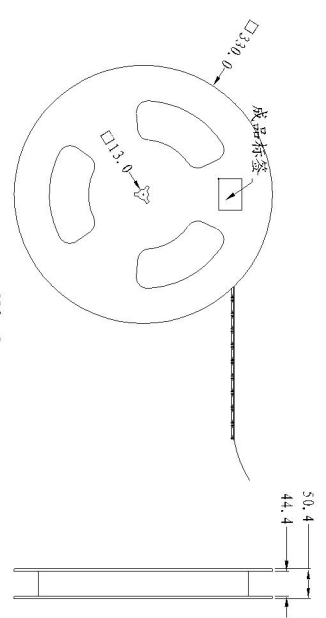


纸箱规格: 350*350*385

NO. 4



NO. 3



NO. 2

1. 材质要求:

- 1.1 纸箱的材质为K=K; 外形尺寸为35*35*38.5;
- 1.2 卷盘的材质为PS, 卷盘的外形尺寸为 ϕ 330*30.4;
- 1.3 卷带的材质为PS, 卷带的外形尺寸为20200*24.00*3.0mm;

2. 包装方式:

- 2.1 将卷带放入包装机后, 前空5PCS, 后放产品500PCS, 再后空5PCS; 上带留200mm长度。
- 2.2 将包装好的产品从包装机上取下并包装好, 贴上内盘标签;
- 2.3 把累叠好的7盘叠放入纸箱中共计4.9Kset1, 上下放纸板, 纸箱四个角塞护角纸;
- 2.4 把包装好的成品打包邮箱, 并在纸箱外贴上标签

REV	DESCRIPTION	APPD	DATE

深圳市连欣科技有限公司

DWG NO: SMPXX-SIS1-2000-A	MATERIAL:	TITLE: SIM PUSH-PUSH卡座 1. 9H	
LOT NO: XXXX	FINISH:	PART NO: XDMS-08A1-094	REV: C/0
UNIT: mm	SIZE: A4	SCALE: 1:1	SHEET: 2 OF 2
TOLERANCES: GENERAL ANGLE: X.X=±0.35 X.XX=±0.25 X.XXX=±0.15		DR: 杨俊 09/13	APP: