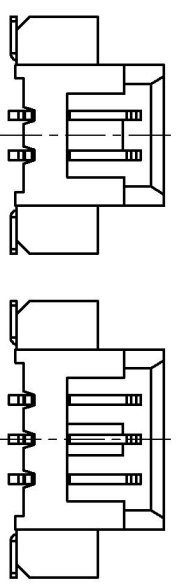
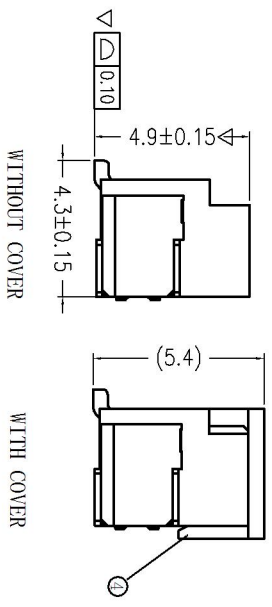
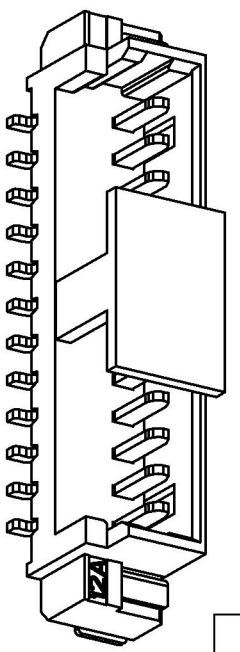
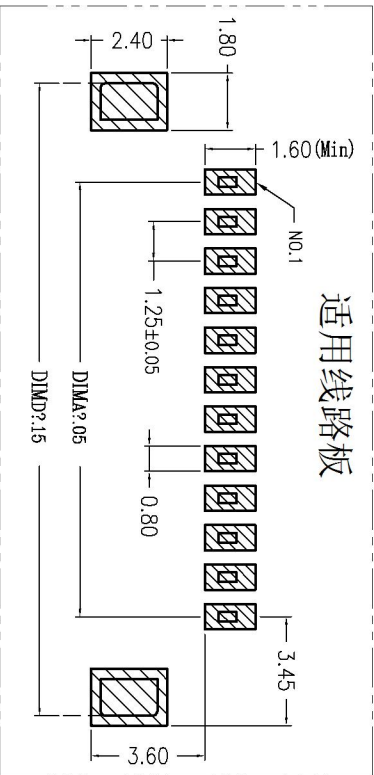
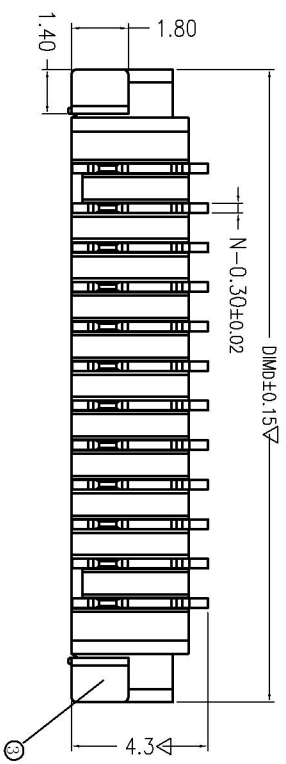
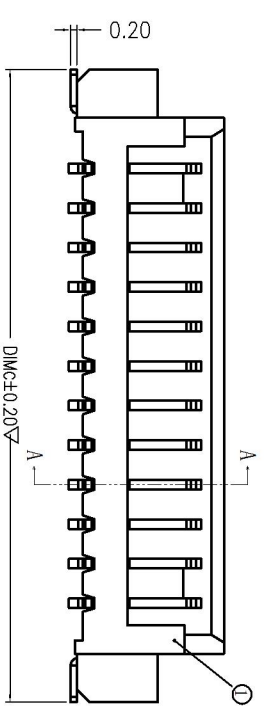
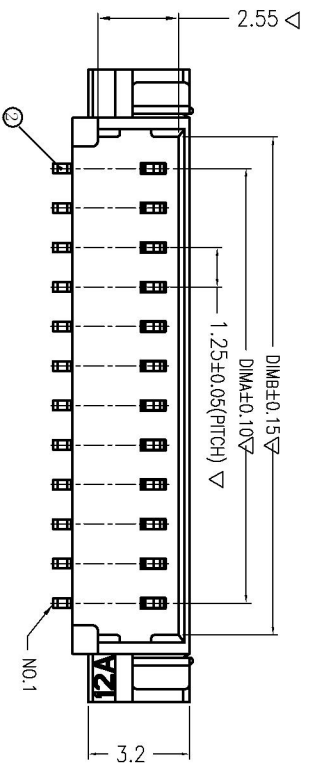
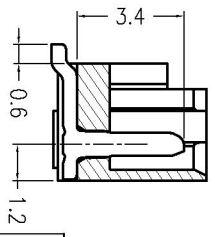


REV(版本)	DESCRIPTION(描述)	NAME(名字)	DATE(日期)



LOCK CONFIGURATION (锁扣位置)



序号	项目	描述	备注
1	塑胶	LCP	
2	端子	黄铜	
3	垫片	黄铜	
4	盖子	LCP	

一般公差 (TOLERANCE)  
 X ±0.60 XX ±1.0  
 Y ±0.80 XXX ±0.6  
 ANGLES 45°

技术规格:

- 操作表面应光滑, 无毛边, 无明显缺陷.
- 缺陷、裂纹等现象.
- 温度范围: -40°C~85°C.
- Working temp: -40°C~85°C.
- 额定电压: 100V AC/DC.
- Voltage rating: 100V AC/DC (rms)
- 接触电阻: ≤10mΩ.
- Contact resistance: 10mΩ max.
- 绝缘电阻: ≥100MΩ.
- Insulation resistance: 100MΩ min
- 额定电流: 2A, AC/DC.
- Current rating: 2A AV/DC
- 耐电压: AC 500V/1分钟.
- Withstanding Voltage: 500V AC/minute
- Pin保持力: 5N min.
- Pin Retention Force: 5N min
- 主体材料: LCP U194-V0, 本色.
- Housing material: LCP U194-V0, 本色
- 端子材料: 黄铜C2680, 镀镍50μm, 镀亮铜1000μm.
- Terminal material: Brass C2680, plating Ni 50μm min, plating Tin 1000μm min
- 垫片材料: 黄铜C2680, 镀镍50μm, 镀亮铜1000μm.
- Solder tab material: Brass C2680, plating Ni 50μm min, plating Tin 1000μm min
- 标注“∇”为重要尺寸.
- MAJOR DIMENSION: ∇

CKT	DimA	DimB	DimC	DimD
2	1.25	3.25	7.50	7.50
3	2.50	4.50	8.75	8.75
4	3.75	5.75	10.00	10.00
5	5.00	7.00	11.25	11.25
6	6.25	8.25	12.50	12.50
7	7.50	9.50	13.75	13.75
8	8.75	10.75	15.00	15.00
9	10.00	12.00	16.25	16.25
10	11.25	13.25	17.50	17.50
11	12.50	14.50	18.75	18.75
12	13.75	15.75	20.00	20.00
13	15.00	17.00	21.25	21.25
14	16.25	18.25	22.50	22.50
15	17.50	19.50	23.75	23.75
16	18.75	20.75	25.00	25.00
17	20.00	22.00	26.25	26.25
18	21.25	23.25	27.50	27.50
19	22.50	24.50	28.75	28.75
20	23.75	25.75	30.00	30.00

# 深圳市连欣科技有限公司

品名 (TITLE)	制图 (DR)	XTAO
Pitch: 1.25mm 立贴闭口 SMT	校对 (CHKD)	Al ex
料号 (DWG. NO)	审核 (APPD)	
<b>XDWF-1251LT-2*P</b>		
比例 (SCALE)	单位 (UNITS)	页码 (SHEET)
1:1	mm	1 OF 1
		SIZE
		A4
		REV
		A