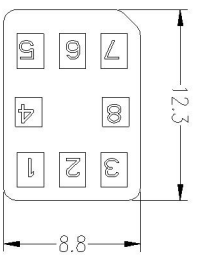
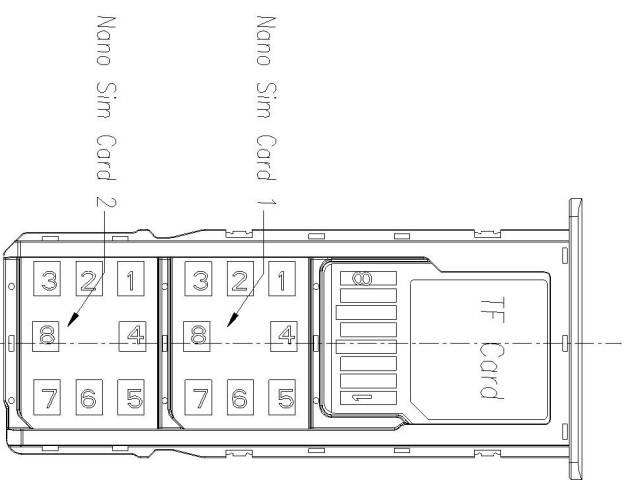
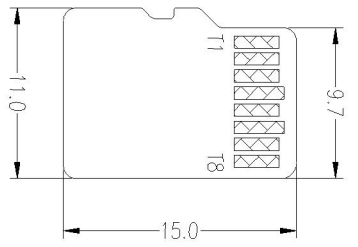
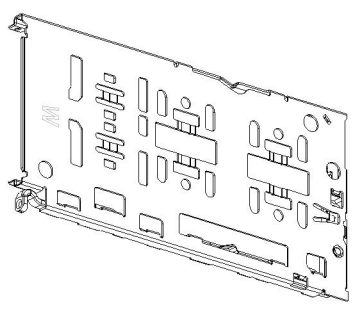
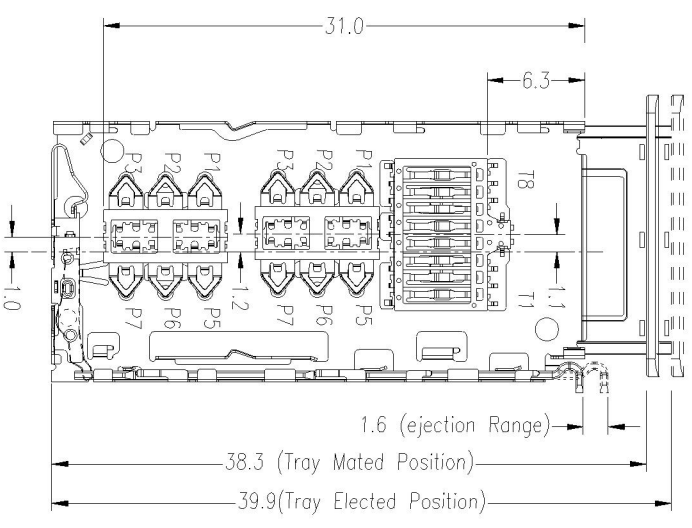
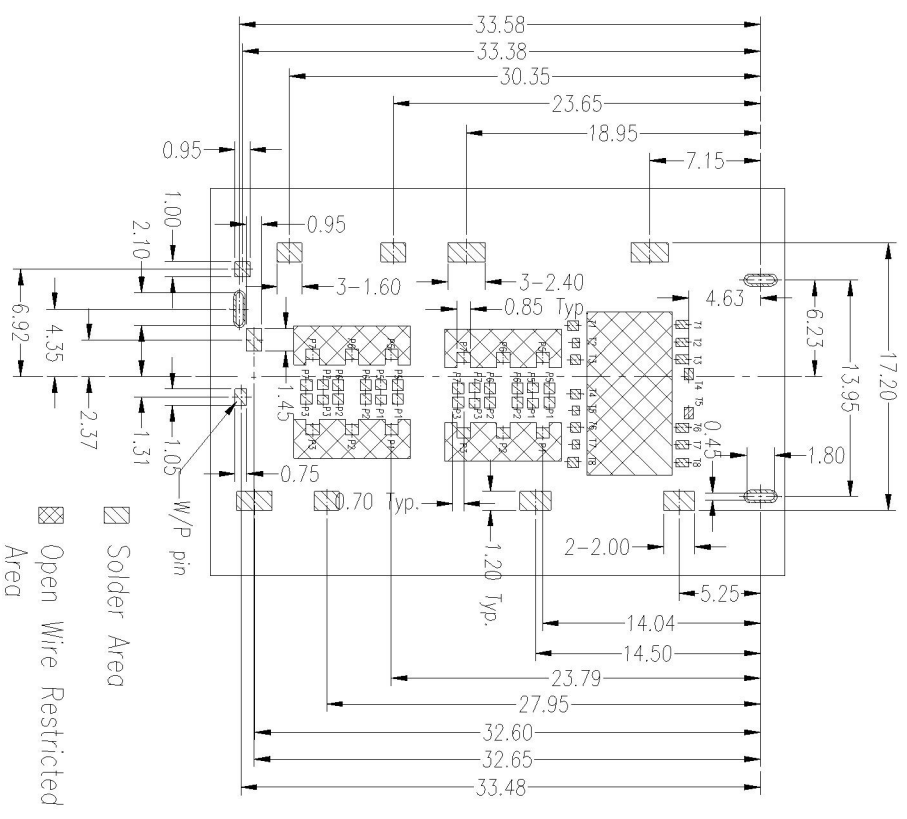


REV.	ECN NO	LOCATIONS	DESCRIPTION	DATE	REVISER	APPD
A						



Nanosim卡 Pin脚定义 TF卡 Pin脚定义

8P	描述	No.	描述
P1	Vcc	T1	DAT2
P2	RST	T2	CD/DAT3
P3	CLK	T3	CMD
--	Reserved	T4	VDD
P5	GND	T5	CLK
P6	Vpp	T6	Vss
P7	I/O	T7	DAT0
--	Reserved	T8	DAT1

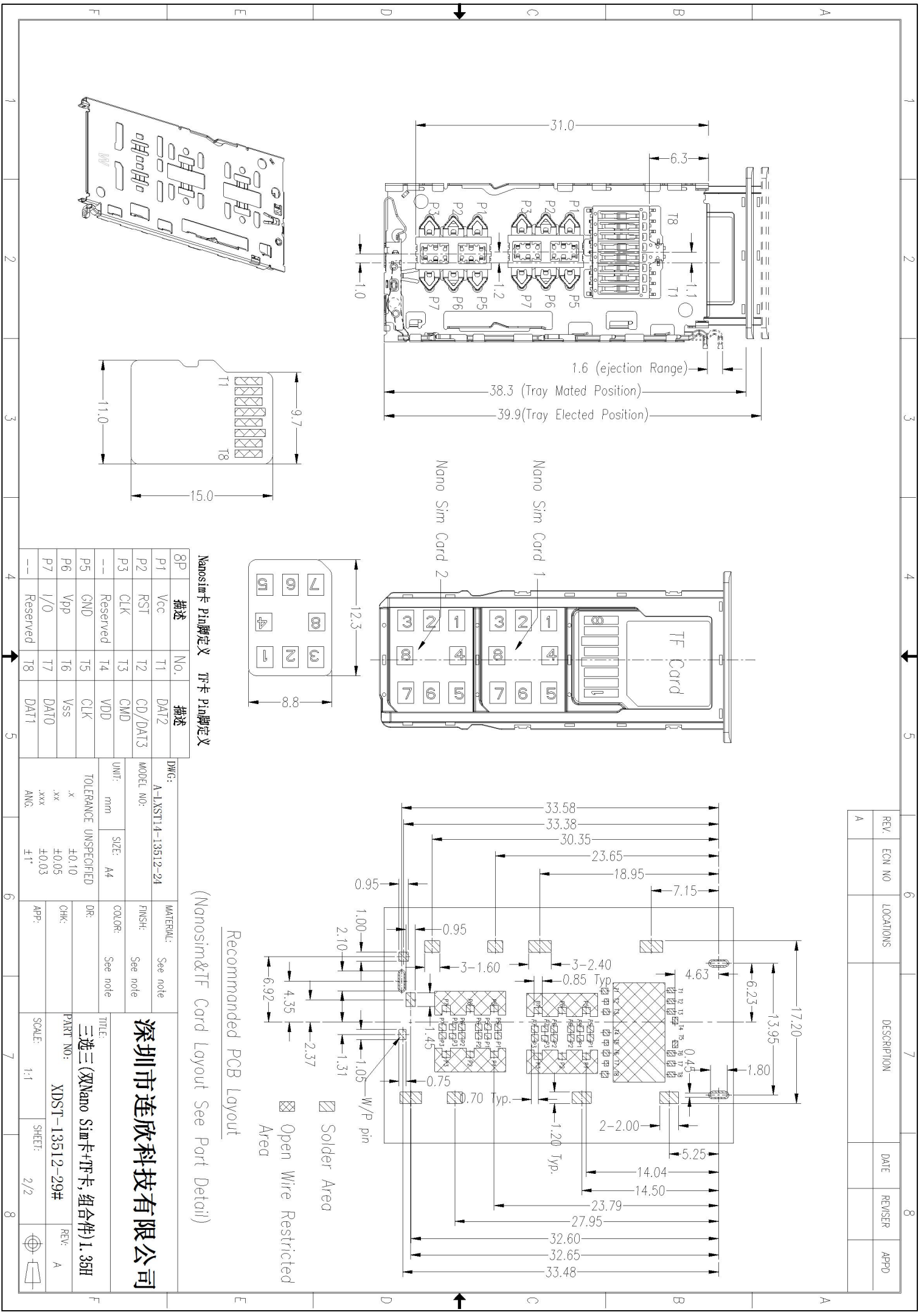


Recommended PCB Layout

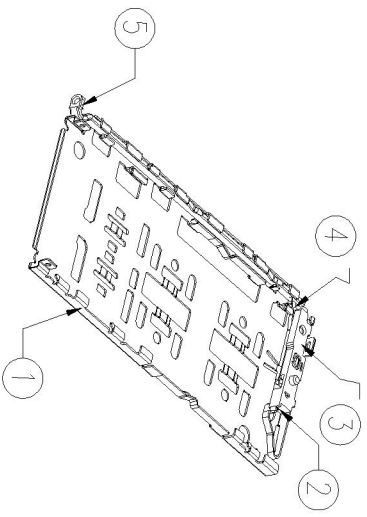
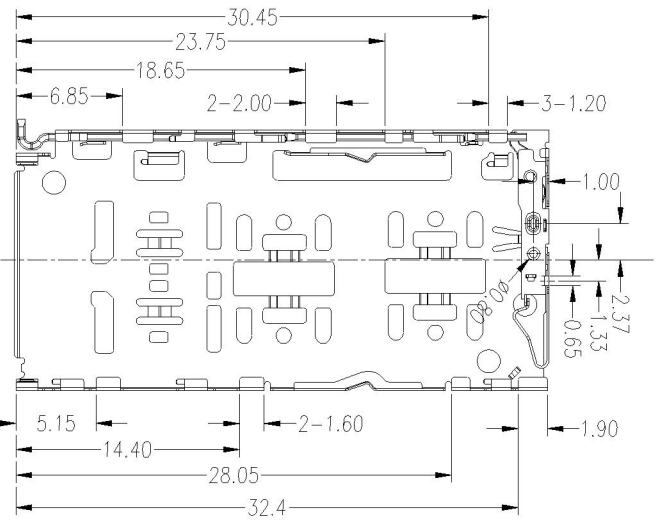
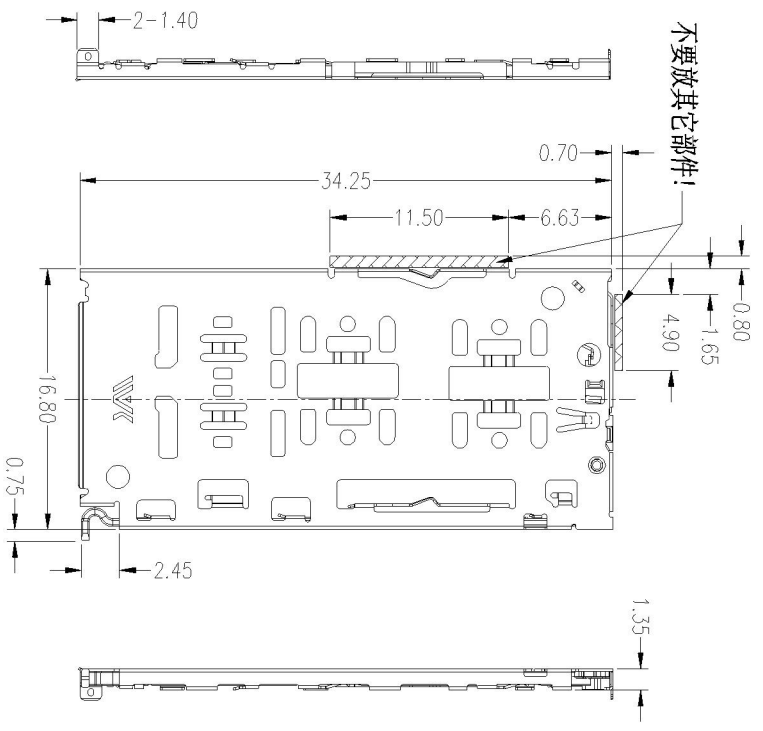
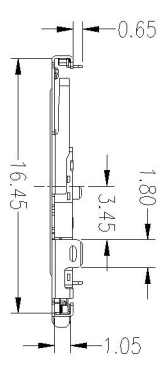
(Nanosim&TF Card Layout See Part Detail)

深圳市连欣科技有限公司

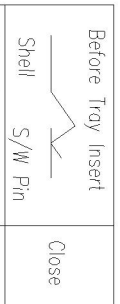
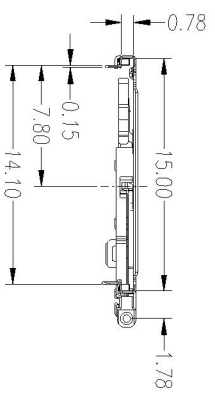
DWG: A-135T14-13512-24	MATERIAL: See note	TITLE: 三选三(双Nano Sim卡+TF卡,组合件)1.35H
MODEL NO: A-135T14-13512-24	FINSH: See note	PART NO: XDST-13512-29#
UNF: mm	SIZE: A4	SCALE: 1:1
DR: See note	DR: See note	SHEET: 2/2
CHK: .x	CHK: .x	REV: A
APP: .xxx	APP: .xxx	
ANG: ±1°	ANG: ±1°	



REV.	ECN NO	LOCATIONS	DESCRIPTION	DATE	REVISER	APPD
A						



Note:  
 1. Specification:  
 1.1 Voltage Rating: 10V  
 1.2 Current rating: 1 A Max.  
 1.3 Dielectric withstanding voltage: 250 V(ac) for 1 min.  
 1.4 Contact resistance: 50 mΩ Max.  
 1.5 Insulation resistance: 1000 MΩ Min.  
 1.6 Durability: 3000 Cycles  
 1.7 Temperature range: -30°C~80°C



No.	Nome	Material	Finish
1	Shell	Sus301 T=0.15	50u"Min. Ni Plated oil.
2	Switch Pin	C5191 T=0.15	50u"Min. Ni underplated oil; 1~3u"Min. Au plated Contact Area; Solderless
3	Detact Housing	LCP 6130; Black	UL 94V-0
4	CAM	Sus301 T=0.40	N/A
5	Pusher	Sus301 T=0.45	N/A

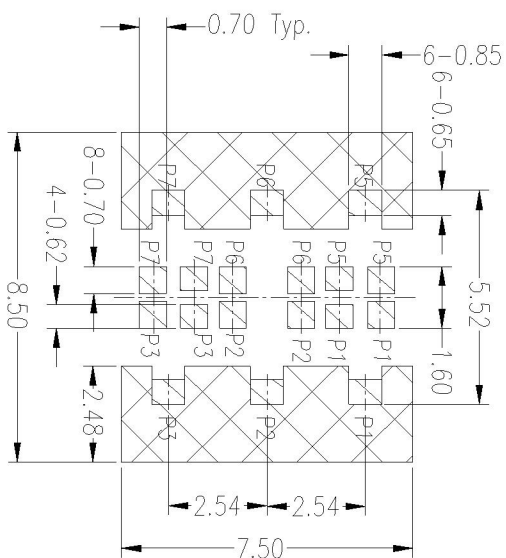
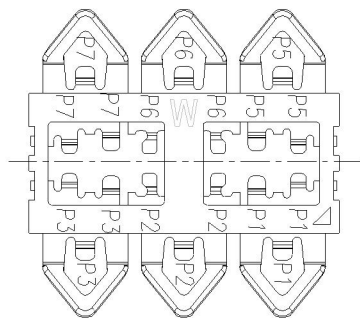
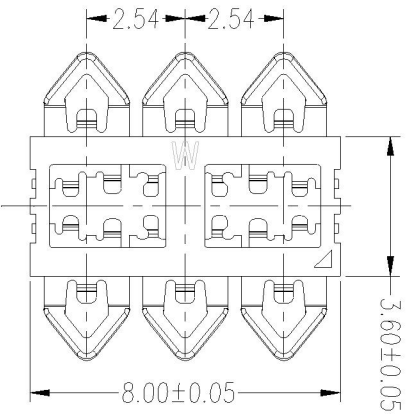
深圳市连欣科技有限公司

卷装	Ø330*24.0/W=56.0; P=24.0	1000	10000
包装方式	规格	卷数	总数

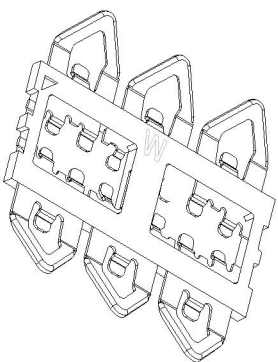
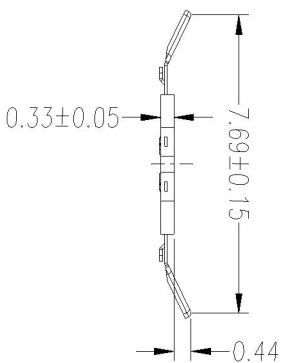
Before Tray Insert	Close
Shell	S/W Pin
After Tray Insert	Open
Shell	S/W Pin

UNIT: mm	SIZE: A4	COLOR: See note	DR: DR	CHK: CHK	APP: APP	SCALE: 1:1	SHEET: 1/2	REV: A
TOLERANCE UNSPECIFIED		MATERIAL: See note		TITLE: 三选三(双Nano Sim卡+TF卡, 组合件) 1.35H		PART NO: XDST-13512-29#		REV: A
MODEL NO: A-LASST14-B13512-29		FINISH: See note		DR: DR		SCALE: 1:1		REV: A
FINISH: See note		COLOR: See note		CHK: CHK		SHEET: 1/2		REV: A

REV.	ECN NO	LOCATIONS	DESCRIPTION	DATE	REVISER	APPD
A						



Recommended PCB Layout



焊接区!

禁止布线 (至少表层不能露铜)!

Nanosim卡 Pin脚定义

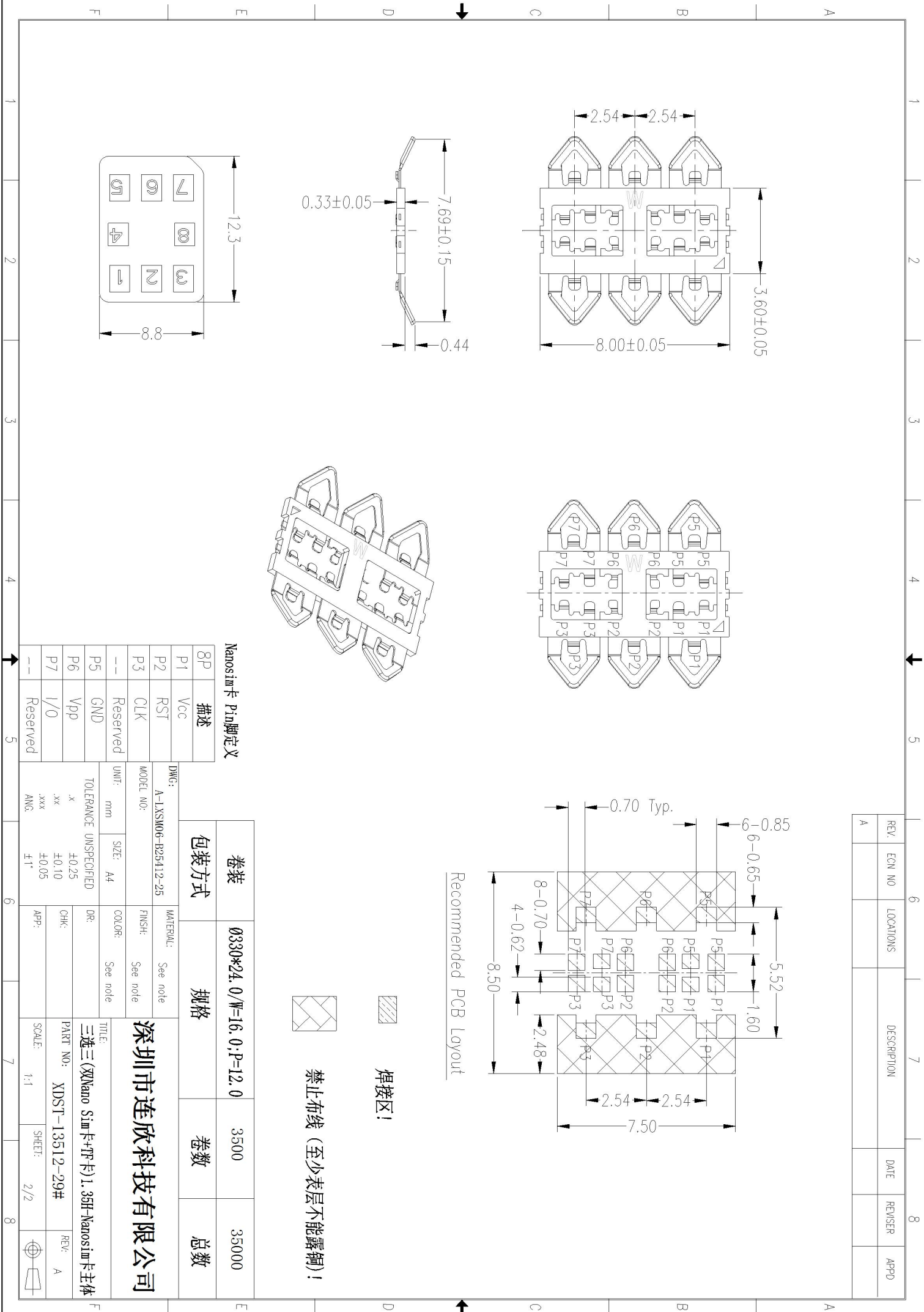
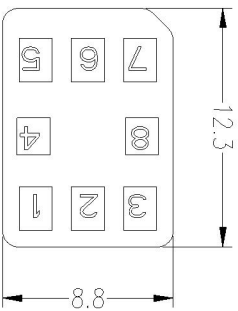
8P	描述
P1	Vcc
P2	RST
P3	CLK
--	Reserved
P5	GND
P6	Vpp
P7	I/O
--	Reserved

卷装	规格	卷数	总数
Ø330*24.0/W=16.0;P=12.0		3500	35000

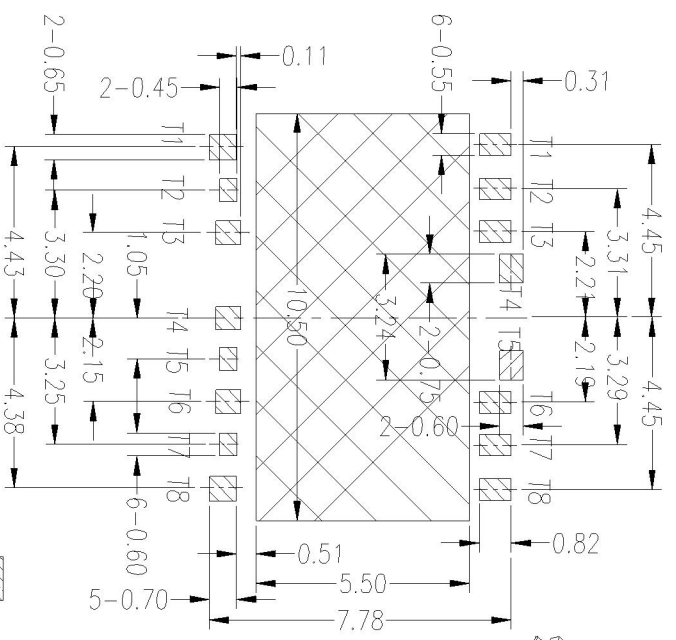
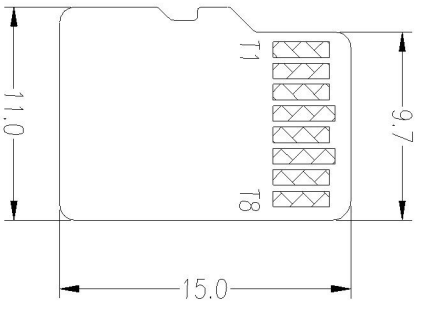
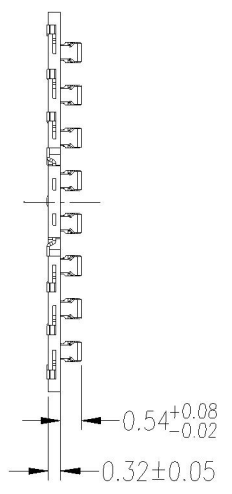
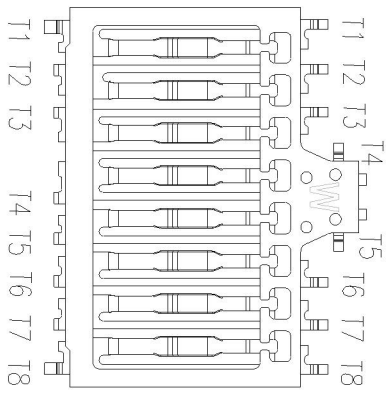
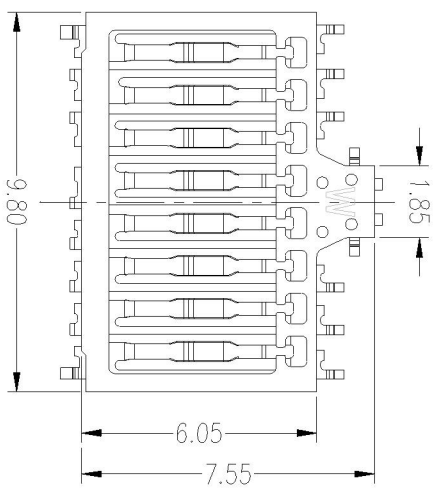
深圳市连欣科技有限公司

三选三(双Nano Sim卡+TF卡)1.35H Nanosim卡主体

DWG: A-LXSM06-B254112-25	MATERIAL: See note	TITLE: 三选三(双Nano Sim卡+TF卡)1.35H Nanosim卡主体
MODEL NO:	FINSH: See note	PART NO: XDST-13512-29#
UNIT: mm	SIZE: A4	SCALE: 1:1
TOLENANCE UNSPECIFIED	DR:	SHEET: 2/2
.x ±0.25	CHK:	REV: A
.xx ±0.10	APP:	
.xxx ±0.05		
ANG. ±1°		



REV.	ECN NO	LOCATIONS	DESCRIPTION	DATE	REVISER	APPD
A						

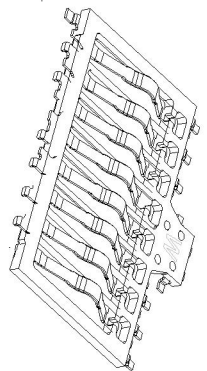


Recommended PCB Layout



焊接区!

禁止布线 (至少表层不能露铜)!



TF卡 Pin脚定义

No.	描述
T1	DAT2
T2	CD/DAT3
T3	CMD
T4	VDD
T5	CLK
T6	VSS
T7	DAT0
T8	DAT1

卷装	Ø330*24.0/W=16.0;P=12.0	3000	42000
包装方式	规格	卷数	总数

DWG: A-1XTF08-B11012-17		MATERIAL: See note	
MODEL NO:		FINSH: See note	
UNIT: mm	SIZE: A4	COLOR: See note	
TOLERANCE UNSPECIFIED			
.x	±0.25	DR: 三选三(双Vano Sim卡+TF卡) 1.35H-TF主体	
.xx	±0.10	CHK: XDST-13512-29#	
.xxx	±0.05	APP: SCALE: 1:1	
ANG.	±1°	SHEET: 2/2	

深圳市连欣科技有限公司

